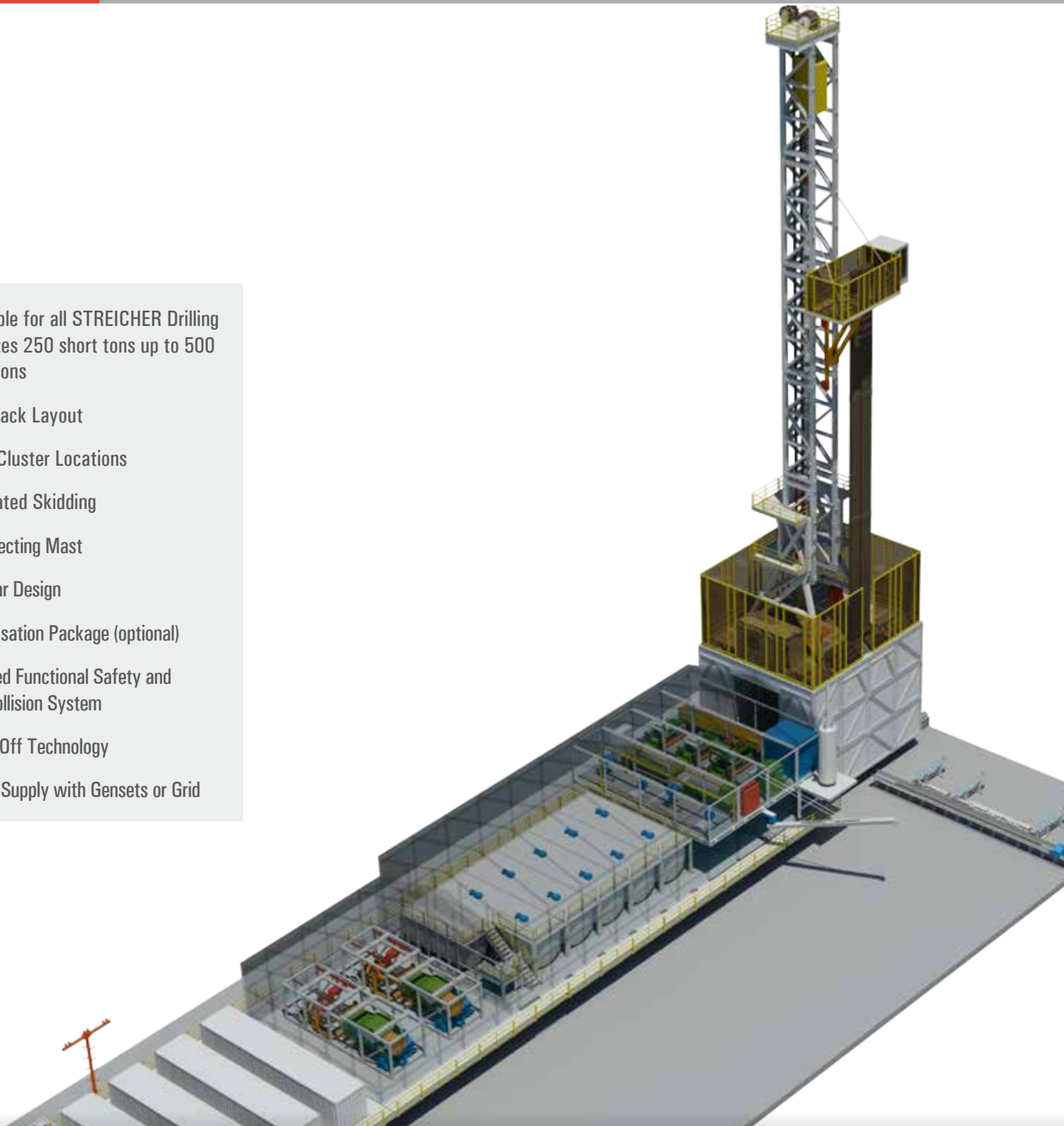


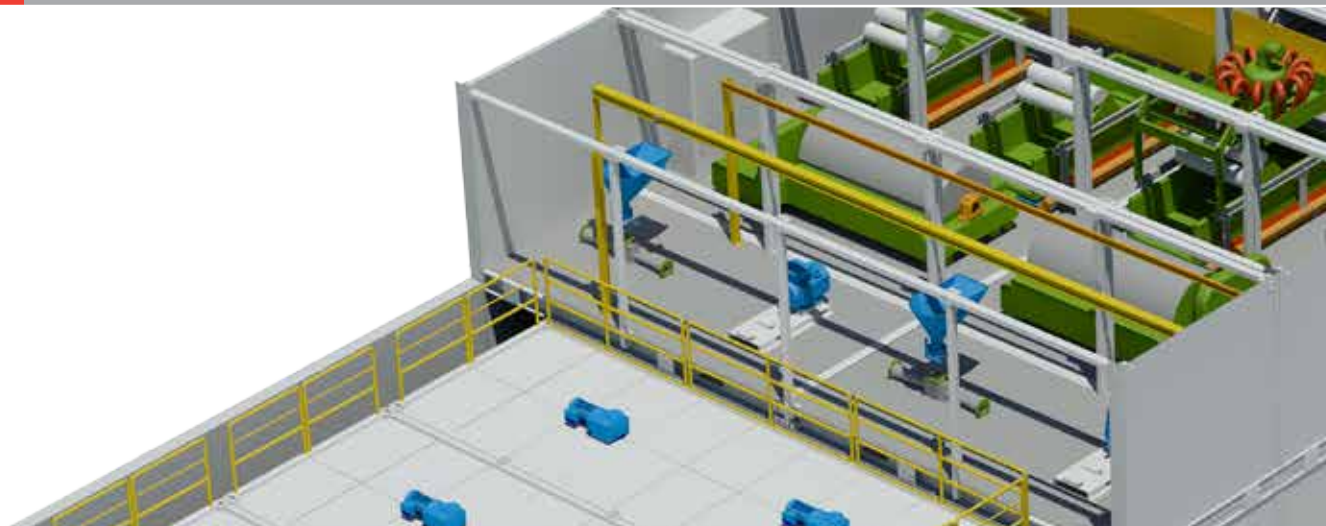


DRILLING TECHNOLOGY

- Available for all STREICHER Drilling Rig Sizes 250 short tons up to 500 short tons
- Rail Track Layout
- Small Cluster Locations
- Integrated Skidding
- Self Erecting Mast
- Modular Design
- Winterisation Package (optional)
- Certified Functional Safety and Anti-Collision System
- Hands-Off Technology
- Power Supply with Gensets or Grid



CLUSTER DRILLING UNIT *250 SHORT TONS UP TO 500 SHORT TONS*



Cluster Drilling Unit 250 short tons up to 500 short tons

Highlights

The Cluster Drilling Unit is specifically designed for operation in harsh environmental conditions. The Cluster Drilling Unit can be combined with the whole product range of STREICHER Drilling Rigs and additional with a large number of conventional rig types.

The new generation of STREICHER Drilling Rigs is equipped with various features like integrated drawworks, automated racking board and an automated catwalk system. All operations are conducted remotely from the driller's cabin.

Mast and substructure as well as drilling rig's sub-systems are installed on skidding frames, which are equipped with a roller system. This configuration, in combination with a track arrangement, implicates low bearing loads and one direction skidding.

Cluster Drilling Unit

- Winterisation Package
- Skidding in One Direction
- Modules on Skidding Frames
- Rail Track Layout
- Side Lighting
- Easy and Safe Maintenance Access
- Enclosed Rig Floor and Substructure (BOP)
- Application in Harsh Conditions
- Easily Expandable
- Hot Air Blower

Power Generation

- Generator Sets or Grid Supply
- STREICHER AC-Drive and Monitoring System (ACDM)
- Auxiliary Generator Set
- Air Heating Module
- Transformer Module
- Integrated Fuel Tank

Mud System

Mud Pumps

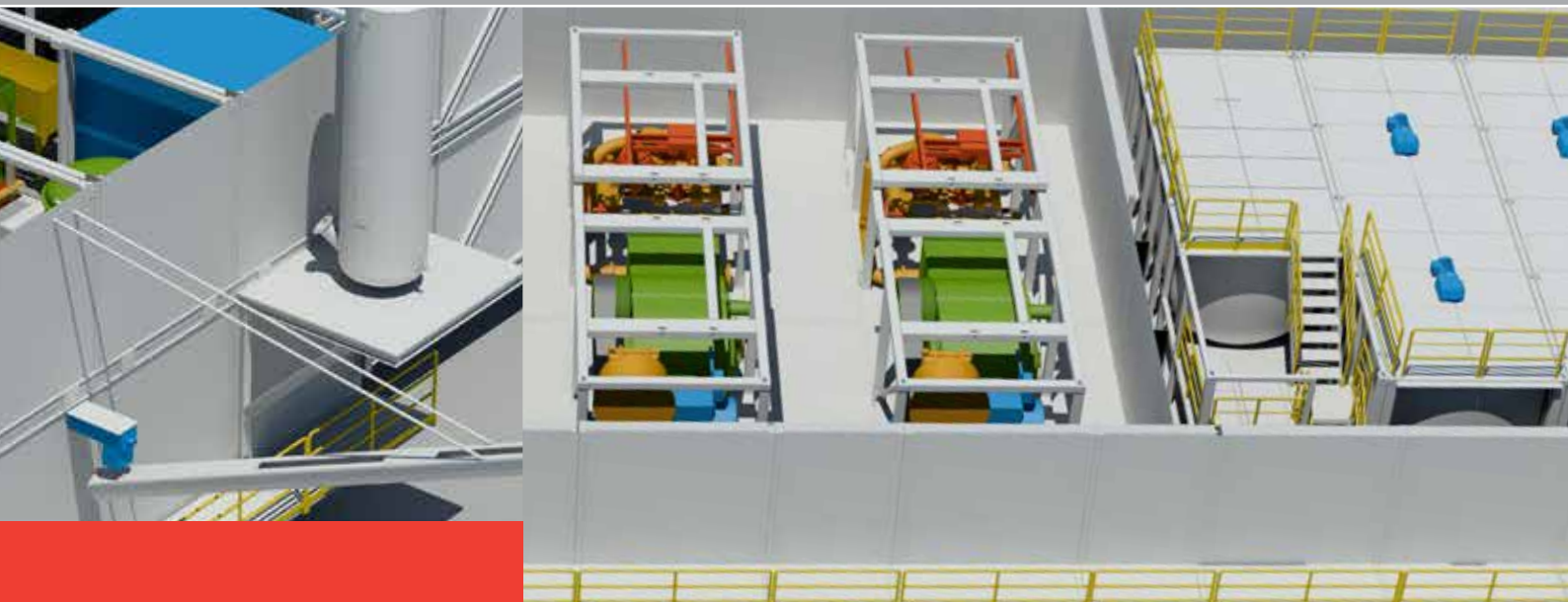
- 2 or 3 Mud Pumps
- 1,600 hp (1,194 kW)

Mud Tanks

- Suction Tank: 377.4 bbls (60 m³)
- Mix Tank: 377.4 bbls (60 m³)
- Intermediate Tank: 377.4 bbls (60 m³)
- Water Tank: 251.6 bbls (40 m³)

Mud Treatment

- 2 or 3 Shale Shakers
- 1 Mud Cleaner
- Centrifuges
- Trip Tank: 94.3 bbls (15 m³)
- Vacuum Degasser and Mud Gas Separator (optional)
- Sandtrap Module
- Flocculation Module
- Flow Line Divider

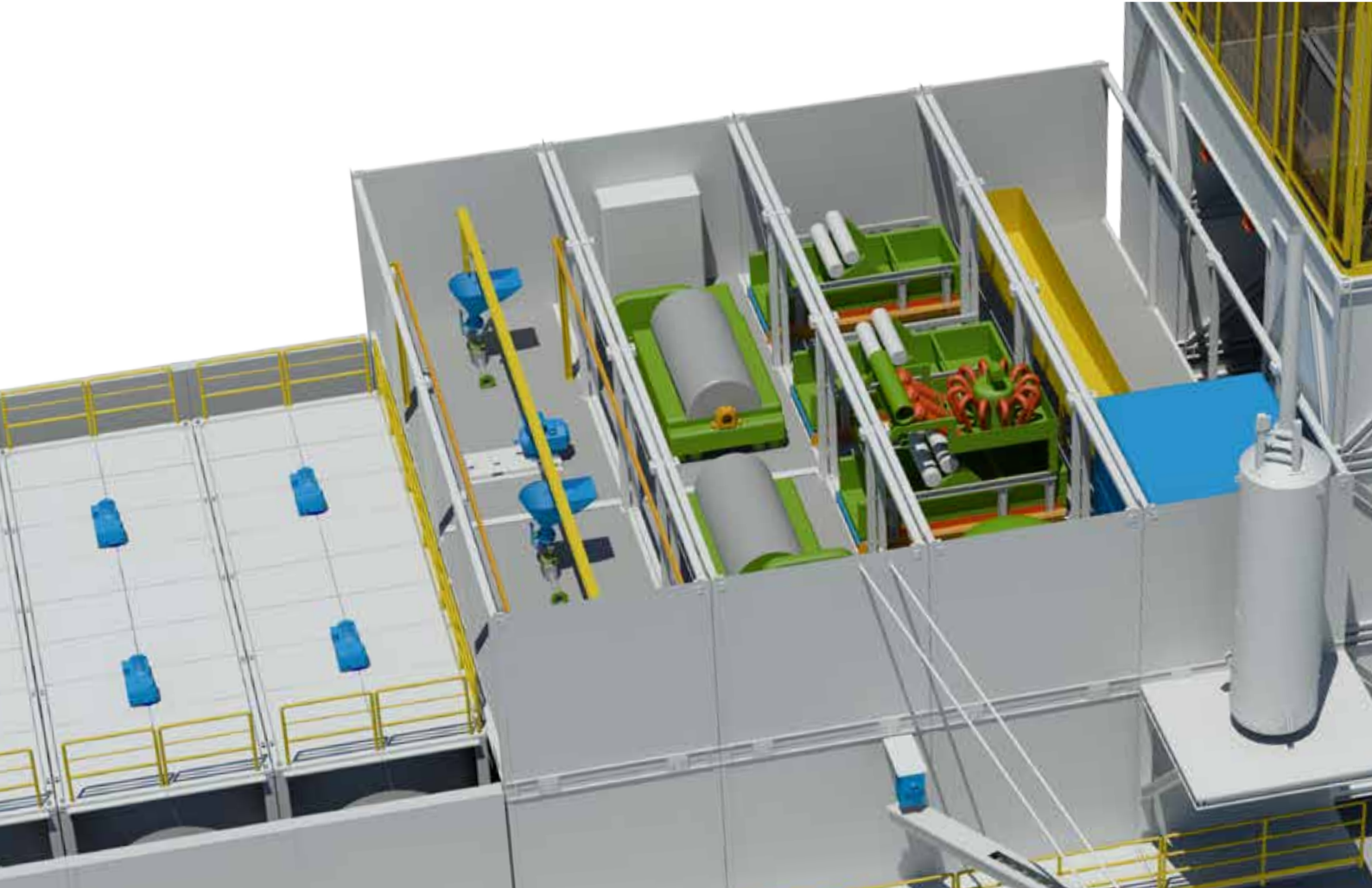


Additional Options

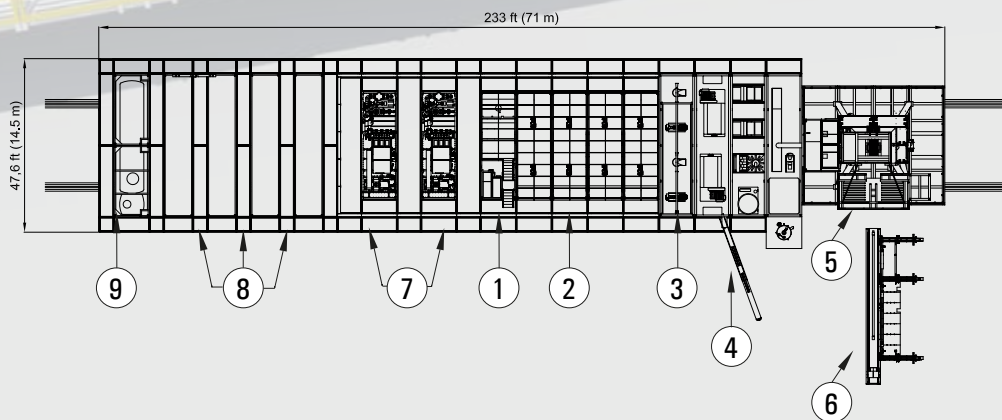
- STREICHER Load-Torque-Cell
Direct Measurements with Tolerance < 1 %
- Catwalk
- Sound Proofing of Generator Packages
- Optional Fast Moving Transport System
- Third Party Inspections and Certificates
- Vacuum Degasser
- Well Control System
- Downhole Equipment
- Different Type of Roughneck
- Casing Drilling
- Modules Trailer Mounted

Applied Standards and Regulations

- Machinery Directive 2006/42/EC
(CE – declaration of conformity)
- Pressure Equipment Directive 97/23/EC
- Explosion Proof Equipment Directive 94/9/EC (ATEX)
- Low Voltage Equipment 2006/95/EC
- Electromagnetic Compatibility 2004/108/EC
- Functional Safety IEC 61508
- Drilling and Well Servicing Structures API Spec. 4F
- Drilling and Production Hoisting Equipment API Spec. 8C
- GOST



Footprint



Rig Component

1. Mixing Unit
2. Mud Tanks
3. Solids Control Unit
4. Auger
5. Drilling Rig
6. Catwalk (optional)
7. Mud Pumps
8. Power Supply
9. Fuel Tank